

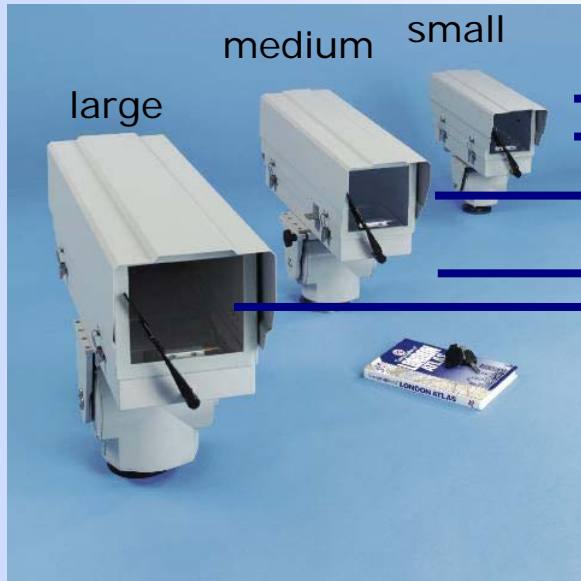
# Security Systems Division



Weatherproof Housing  
Pan and Tilt

**PENTAX**

# What fits what



light

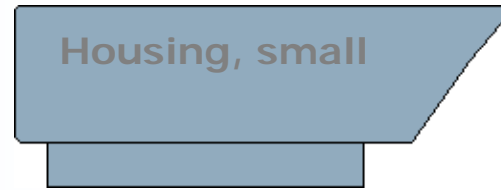
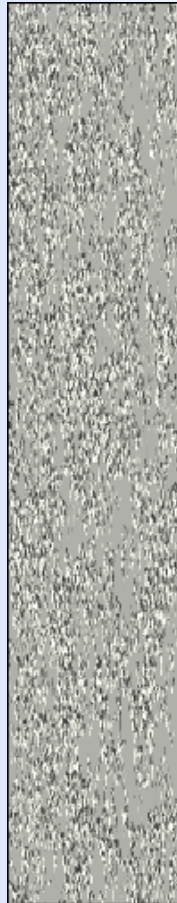


medium

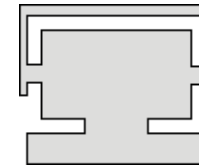
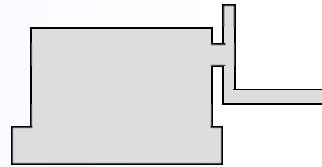


heavy

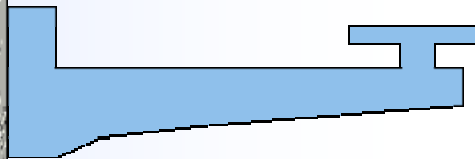
# What fits what (housing, small)



Housing, small

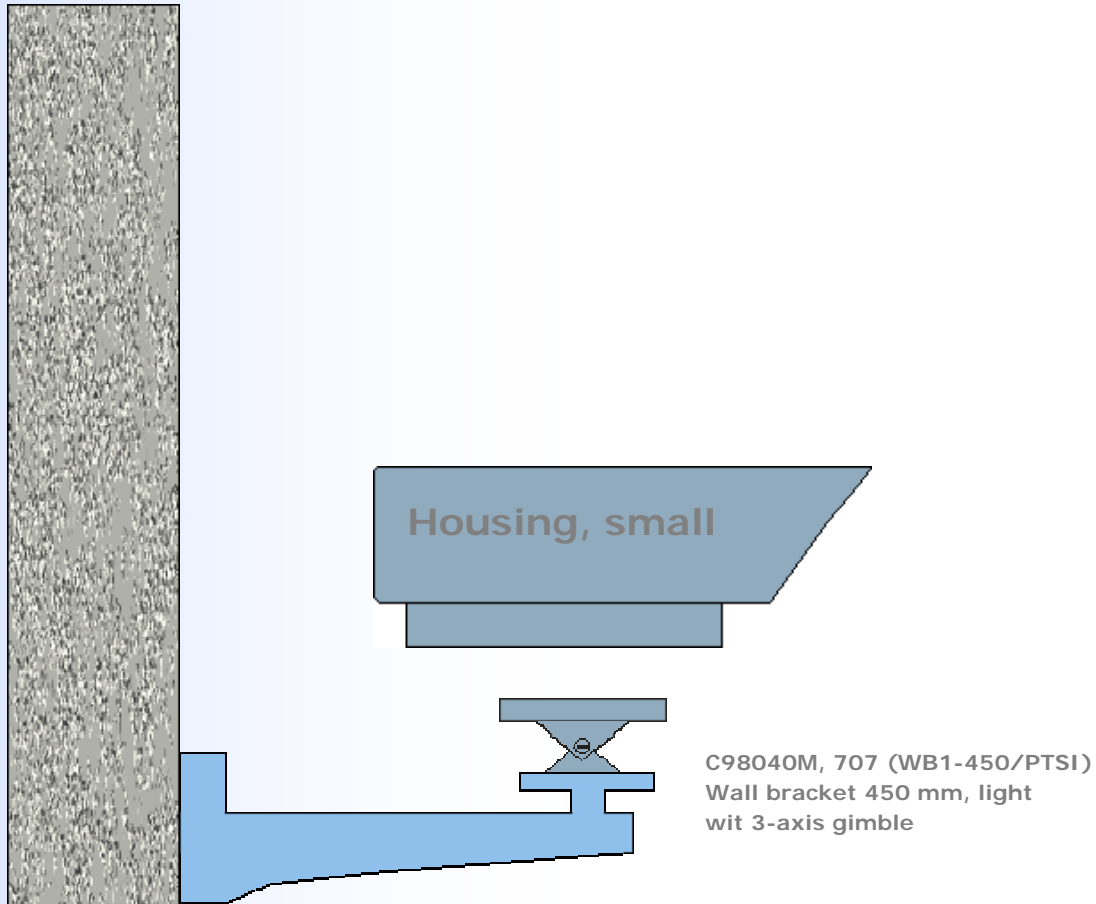


Pan/tilt head, light or medium weight,  
with or w/o longlife presets,  
side mount or over the top,  
up to 16 kg loading

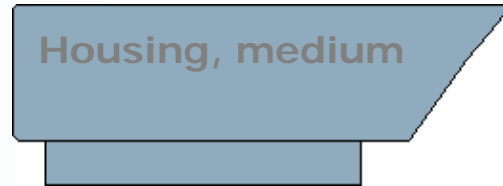
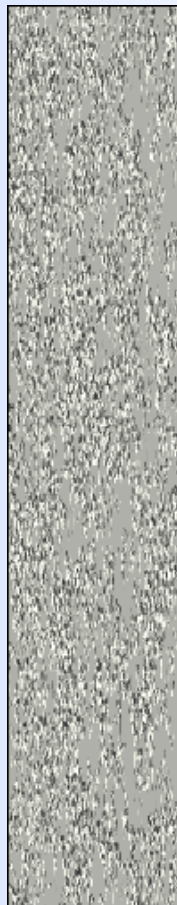


C98037M, 703 (WB1-450)  
Wall bracket 450 mm, light  
w/o 3-axis gimble

# What fits what (housing , small)



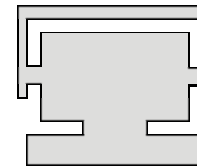
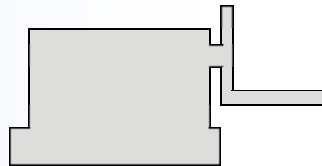
# What fits what (housing , medium)



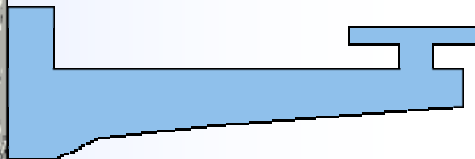
Housing, medium



C98043M, 600DER Mount plate  
for Raytec lamp up to Raymax, Hybrid  
and Raylux ...100 on P/T head, medium

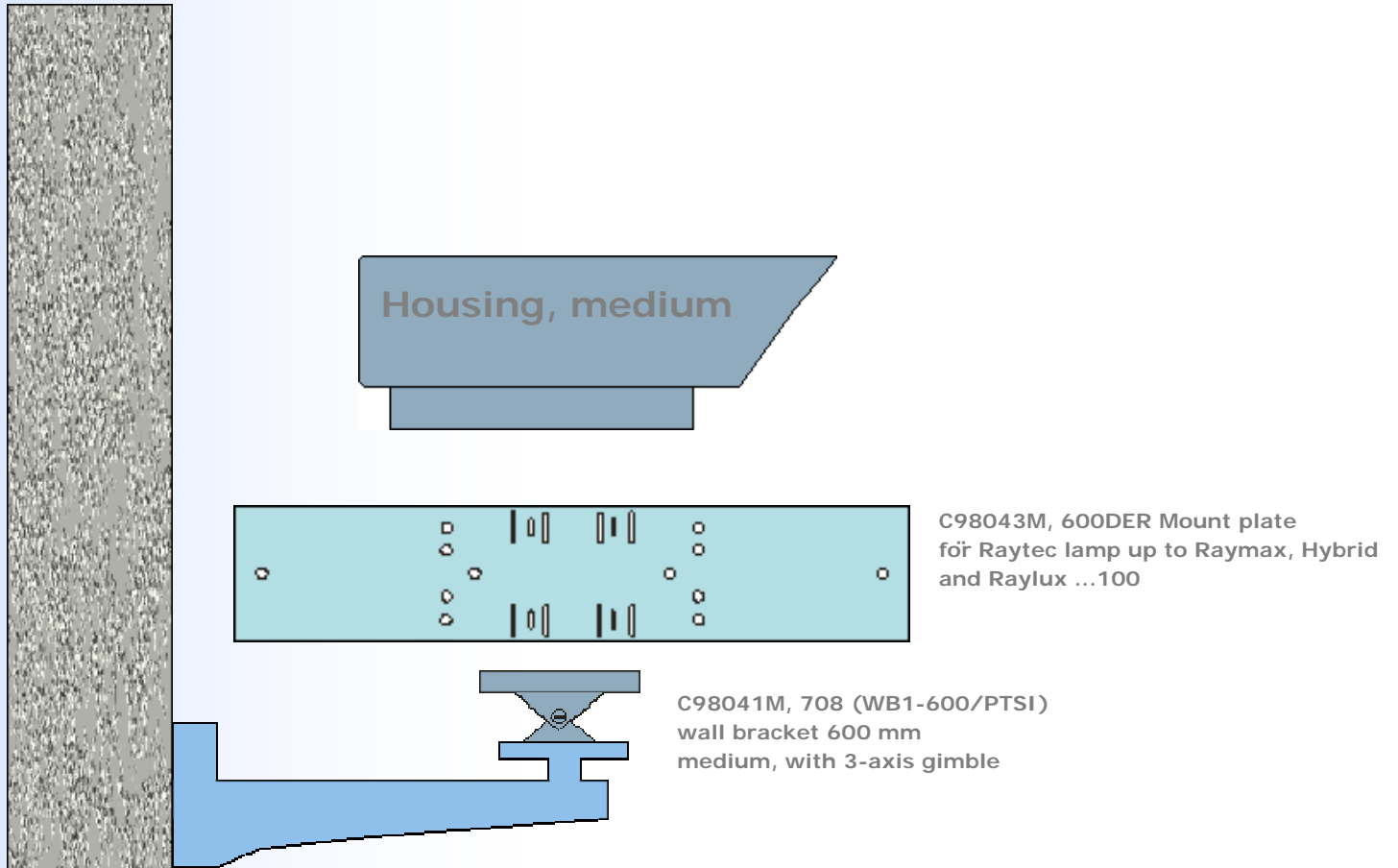


Pan/tilt head, medium or heavy  
weight, with or w/o longevity presets,  
side mount or over the top,  
up to 50 kg loading

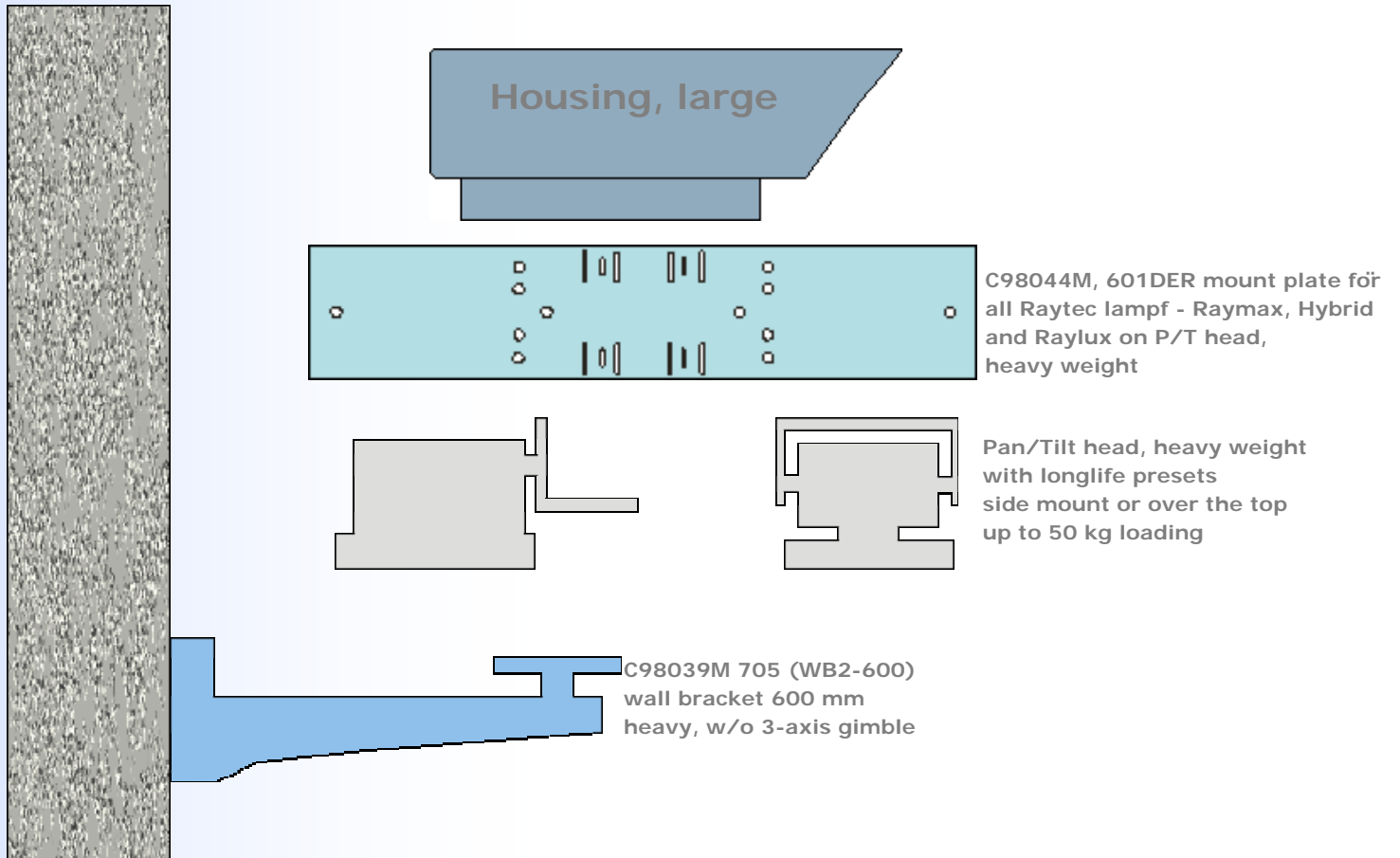


C98038M, 704 (WB1-600)  
wall bracket 600 mm  
medium, w/o 3-axis gimble

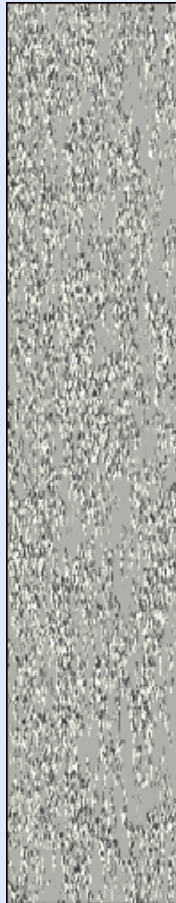
# What fits what (housing medium)



# What fits what (housing , large)



# What fits what (housing , large)



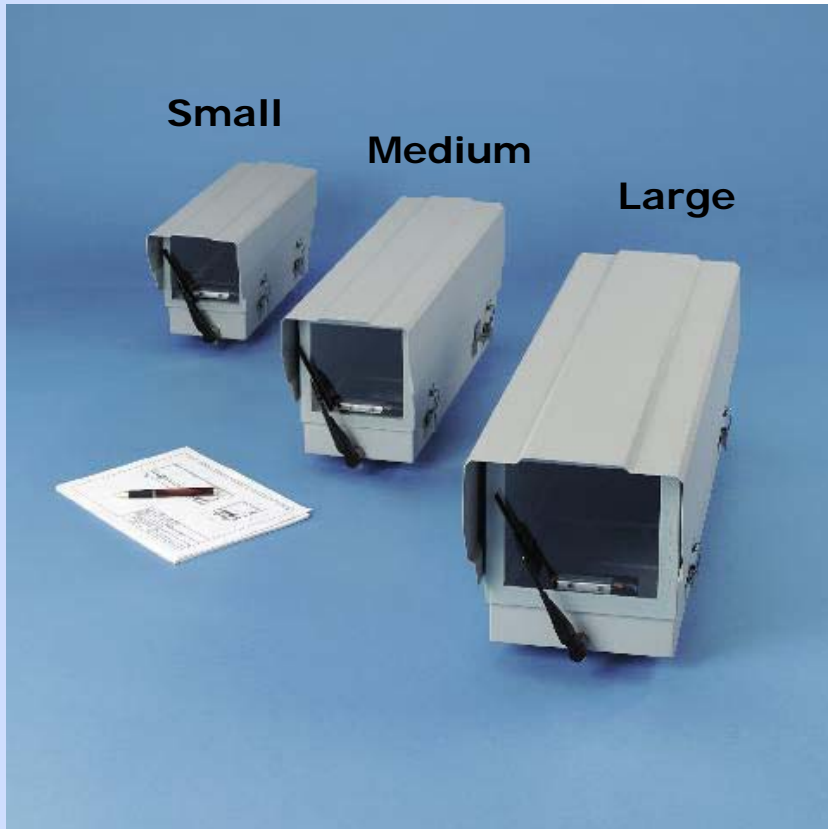
C98044M, 601DER mount plate for all Raytec lamps - Raymax, Hybrid und Raylux, heavy weight



C98042M, 709 (WB2-600/PTSI) wall bracket, 600 mm heavy with 3-axis gimble

# Weather Proof Housings

---



## Available Voltages:

AC  
230 V, 24 V, 110V

DC  
12 V, 24 V

## Inside Capacity

Small  
330 x 114 x 110 mm

Medium  
510 x 140 x 145 mm

Large  
650 x 180 x 170 mm

(L x W x H)

# Pan/Tilt Head, light weight



## Available Voltages:

DC

12V & 24V

AC

Not Available

## Load Capacity

Side Mount:

Up to 10 KG

Over the top:

Up to 6 kg

## Speed per Second

Pan/Sec.

10° , 30°

Tilt/Sec.

10°

# Pan/Tilt Head, medium weight



## Available Voltage

DC

12 V, 24 V

AC

24 V, 110 V, 230V

## Load Capacity

Side Mount:

25 KG

Over the Top:

16 kg

## Speed per Second

DC

Speed/Sec.

32°, 48°, (58°)

Tilt/Sec

12°

AC

Speed/Sec.

3°, 6°, & 12°

Tilt/Sec.

3° & 6°

No Speed Control with AC

**PENTAX**

# Pan/Tilt Head, heavy weight



## Available Voltage

DC

12 V, 24 V

AC

24 V, 230V

## Loading:

Side Mount:

50 kg

Over the Top:

45 kg (with 2 Dampers)

30 kg (with 1 Dampers)

20 kg (No Dampers)

## Speed per Second

DC

Speed/Sec.

30°

Tilt/Sec.

10°

AC

Pan/Sec.

3°, 6°, & 12°

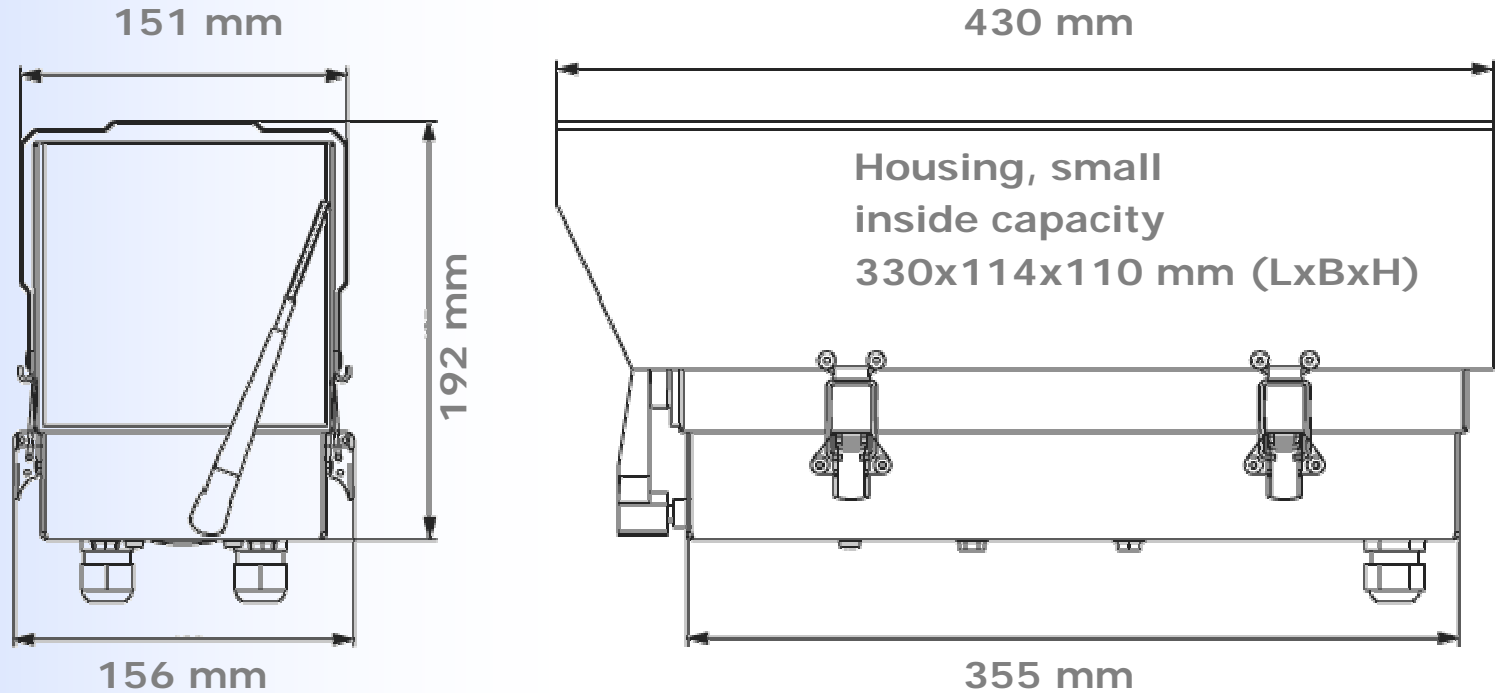
Tilt/Sec.

3° & 6°

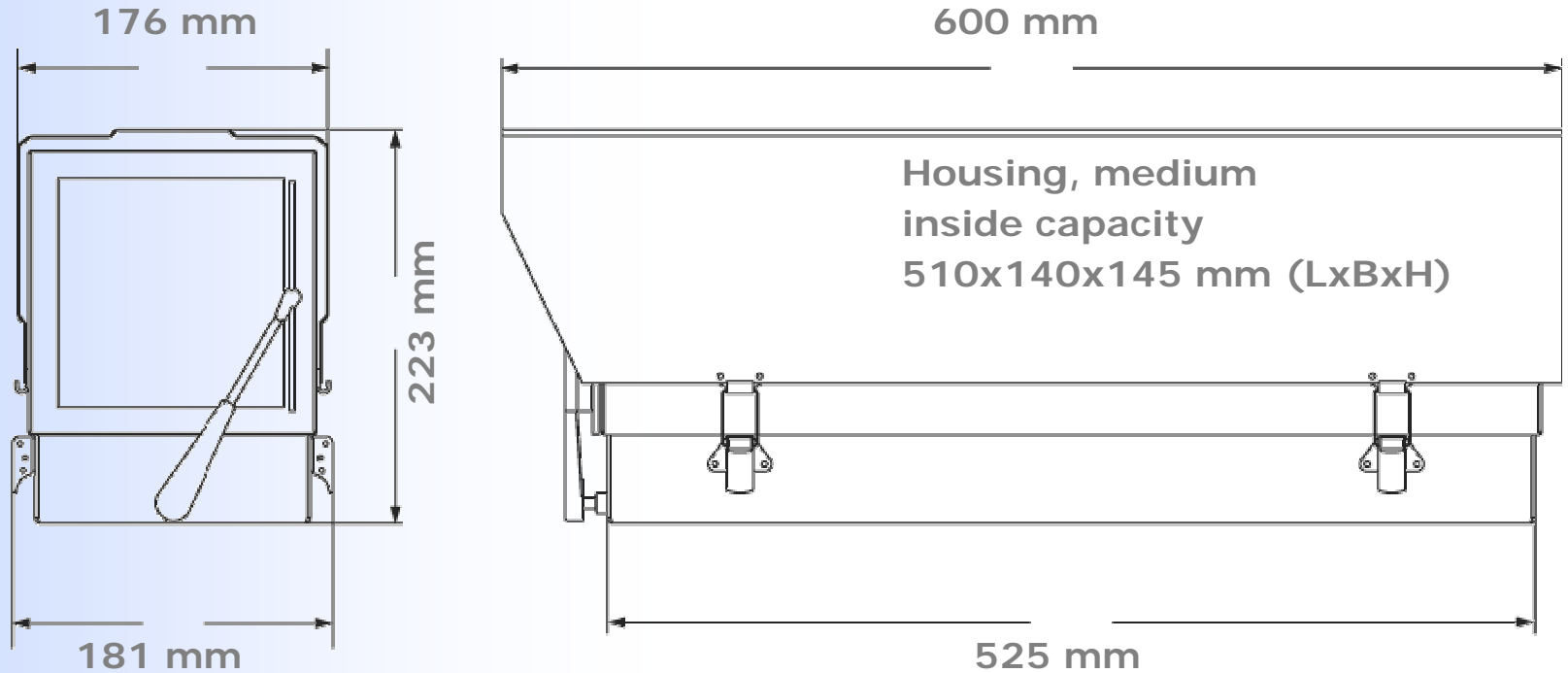
No speed Control with AC

**PENTAX**

# Outside Dimensions



# Outside Dimensions



# Outside Dimensions



233 mm

260 mm

232 mm

760 mm

Housing, medium  
inside capacity  
650x180x170 mm (LxBxH)

678 mm

**PENTAX**

# Security Systems – CONTACT

---



PENTAX UK Ltd  
Security Systems Division  
Heron Drive  
Langley, Slough  
SL3 8PN  
UK

Phone (44) 1753 792 722

Fax (44) 1753 792 734

E-Mail [cctv.sales@pentax.co.uk](mailto:cctv.sales@pentax.co.uk)  
[www.pentax.co.uk](http://www.pentax.co.uk)

**PENTAX**